

**Thermit
Welding (GB)**

SmartWeld Rail Setter

Align rails without the need for steel wedges



SmartWeld Rail Setter

Align rails without the need for steel wedges

Thermit® Welding GB Ltd is now able to provide the latest innovation in Rail Alignment devices – the **SMARTWELD RAIL SETTER**, which is designed to enable welders to align rails in all types of track without the need for steel wedges.

The use of steel wedges for alignment of rails is now being viewed as potentially dangerous and will be prohibited by some railway infrastructure companies in the coming months.

Once rails are aligned using the **SMARTWELD RAIL SETTER** they are able to be locked firmly in position without the need for wedges. The **SMARTWELD RAIL SETTER** is also able to be used within hydraulic stressing equipment.

Key Benefits:

- Suitable for all UK sleeper types and fastenings
- Provides safe and secure alignment to the required tolerances for alumino-thermic welding
- No damage to sleepers or fastenings
- Accessories available for third rail and continuous supported track

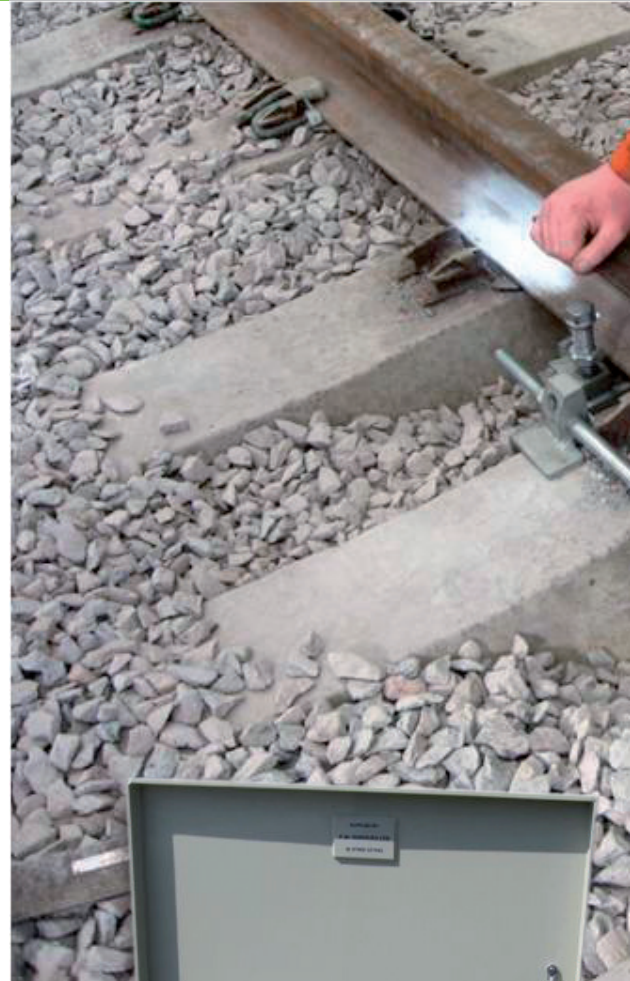
The standard **SMARTWELD RAIL SETTER** comes complete in its own carry case with all attachments required for welding on discreetly supported track, in either flat bottom or bullhead rail sections, on all sleeper types setter kit will contain attachments for welding.

- Flat Bottom, Bullhead Rail (in chairs)
- Concrete, wooden and steel Sleepers
- Pandrol Fastclip fastenings

In addition to the standard **SMARTWELD RAIL SETTER** components, each kit will include:

- Ratchet spanners
- Spacer Blocks
- 4 spare nuts
- 2 spare 'R' pins

Customers can specify which type of carry case they would prefer, the standard issue will be a sturdy Aluminium case, however we can also provide (at extra cost) a bespoke polypropylene box that contains compartments for the rail setters and all of its accessories.



Dimensions:
580mm (W) x 390mm (D)
x 240mm (H) (Al Box)

Weight:
47.5 kg Aluminium Box
including Setter



SMARTWELD RAIL SETTER

Lineside Frames

Also available is the **SMARTWELD RAIL SETTER** Lineside Frame, which enable rails to be accurately aligned and secured out of track.

Additional items required to enable the standard SmartWeld rail setter to be used out of track are:

- SmartWeld Rail Setter Frame
- 4 Adjustable legs
- Frame protector

Frame Dimensions: 1680mm x 643mm

Weight: Frame – 35 kg, Attachments 30 kg

SMARTWELD RAIL SETTER – ST

The ST pack contains additional items which will enable the **SMARTWELD RAIL SETTER** to be used when welding grooved rails, when welding in modular S & C and when welding on slab track.



Training

Thermit® Welding can offer full training in use of the **SMARTWELD RAIL SETTER**. The full course is available to welders and assistant welders and covers instruction in both in track and out of track use of the **SMARTWELD RAIL SETTER**, course duration is 1 day and is open to a maximum of four candidates per course. Training can be conducted at our premises in Rainham or Derby or if suitable training can be arranged at customers premises. Upon successful completion of the training course candidates will be issued with relevant certification and a copy of the current operating manual.



For more information please call: **+44 (0)1708 522626**

Email: **info@thermitwelding.co.uk**

www.thermit-welding.com

RAIL SETTER PARTS LIST

Rail Setters are supplied in pairs and a full kit, enough to support both rails for welding, consists of the following parts:

- 2 Main Assemblies
- 2 Splash Plates
- 4 Fastclip Clamps
- 4 Pandrol / E-clip Clamps
- 4 Timber Sleeper Clamps
- 4 Concrete Sleeper Pads
- 4 Spacer Blocks
- 2 Ratchet Spanners
- 4 Bullhead Rail Attachments (2 LH & 2 RH)
- 6 Clamp Nuts

RAIL SETTER			
TW Part No.	Description No.	Qty per set	Weight
170100	Rail setter complete kit	1	47.5 kg approx
170101	Rail Setter Main Assembly	2	10.0 kg each
170102	Splash plates	2	0.6 kg each
170103	Fast clip clamps	4	1.2 kg each
170104	Pandrol clamps	4	0.6 kg each
170105	Timber sleeper clamps	4	1.3 kg each
170106	Concrete sleeper pad assembly	4	0.5 kg each
170107	Spacer blocks	4	0.3 kg each
170108	Ratchet spanner	2	1.1 kg each
170109	Bullhead rail attachment LH	2	0.4 kg each
170110	Bullhead rail attachment RH	2	0.4 kg each
170111	Nut	6	0.1 kg each
170112	Frame	1	35.0 kg each
170113	Jack legs	4	4.0 kg each
170114	Aluminium box	1	4.4 kg each
170115	SHC/AD Clip adaptor	please call	0.3 kg each

SLAB TRACK RAIL SETTER			
TW Part No.	Description No.	Qty per set	Weight
170200	Rail Setter Assembly for Slab Track complete	1	33 kg approx
170201	Rail Setter Assembly for Slab Track	2	5.0 kg each
170202	Tie Bar	2	6.0 kg each
170203	Head Clamp	2 or bracket/ strap attachment	1.3 kg each
170204	Rail foot clap	2 or head clamp	1.1 kg each
170205	Ratchet strap	2 or head clamp	0.7 kg each
170206	Large Clevis pin	4	-
170207	Small Clevis Pin	4	-

